

# CROSSWAY

## CROSSWAY LE City 10.8/12/13 m – DIESEL EURO VI STEP E

# IVECO BUS

Drive the road of change

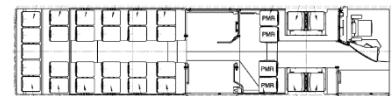


CROSSWAY LE CITY DIESEL EURO VI STEP E			
LENGTH	10,845 mm	12,050 mm	12,965 mm
WIDTH	2,550 mm		
HEIGHT	3,210 / 3,140 mm		
WHEELBASE	4,825 mm	6,030 mm	6,945 mm
FRONT / REAR OVERHANG	2,725 / 3,295 mm		
FRONT / MIDDLE ACCESS HEIGHT	320 / 330 mm		
FRONT / MIDDLE WIDTH	1,200 mm		
TURNING RADIUS (CURB TO CURB)	7,300 mm	8,870 mm	10,070 mm
TURNING RADIUS (WALL TO WALL)	9,140 mm	10,720 mm	11,930 mm
APPROACH / DEPARTURE ANGLES	7° / 7°		
MAX. TECHNICALLY PERMISSIBLE GVW *	19,000 kg / 18,000 kg		
MAX. TECHNICALLY PERMISSIBLE AXLE LOADS*	FRONT / REAR AXLE	12,500 kg / 7,200 kg	

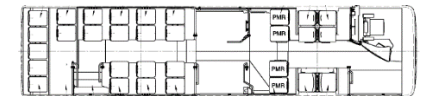
\* Max allowed vehicle axles load and GVW is depending on local regulation in registration country

	CURSOR 9	TECTOR 7
POWER @ 2500 RPM	265 kW (360 hp) @ 2,200 rpm	235 kW (320 hp) @ 2,500 rpm
MAX TORQUE	1,600 Nm @ 1,200 rpm	1,100 Nm @ 1,250 – 1,890 rpm
DISPLACEMENT	8.7 litres	6.7 litres
	6 cylinders in line, vertical rear, Common Rail	

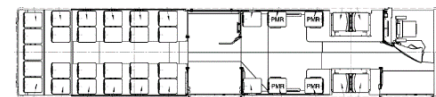
### LAYOUT



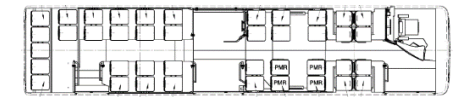
Layout 10,8m: 33 seats + 1 UFR



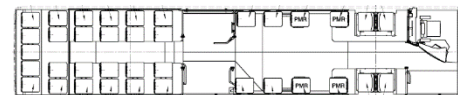
Layout 10,8m: 30 seats + 1 UFR



Layout 12m: 35 seats + 1 UFR



Layout 12m: 41 seats + 1 UFR



Layout 13m: 37 seats + 1 UFR



Layout 13m: 37 seats + 1 UFR

\*Seat Layout can be changed in case of request

# CROSSWAY

## CROSSWAY LE City 10.8/12/13 m – DIESEL EURO VI STEP E

# IVECO BUS

Drive the road of change

### BODY AND EXTERIOR EQUIPMENT

- Anticorrosion cataphoretic treatment of the structure and of the body, finished with a polyurethane resin final coat
- Front door 1,200 mm 2 leaves, middle door 1,200 mm 2 leaves, external opening
- External rearview mirrors, heated, with electrical control

### INTERIOR EQUIPEMENT

- Self-adhesive anti-slip PVC carpet on the floor
- Roof & lateral walls covered by laminated panels
- Separation walls made of laminated panels
- Central platform in front of the middle door
- Cantilever seats
- Manual ramp for disabled persons

### ELECTRICAL EQUIPMENT

- Two batteries 12 V – 225 AH
- Three alternators 150 A
- Electrical box with fuses in the front left compartment
- Internal and external LED lights
- Corner light (integrated in the fog light)
- Fire extinguishing system
- 24 V and 2x USB sockets on the dashboard

### WINDOWS/ THERMAL COMFORT

- Tinted simple glass with 5 opening units (4 units for 10.8 m)
- Two roof hatches, manual control
- Four heaters for the passenger compartment

### DRIVER'S COMPARTMENT

- Adjustable driver's seat with air suspension, headrest, 3 pts safety belt
- Front sun visor with electrical control
- Driver's cabin with door
- Driver's box with lock
- On board computer with fuel consumption control
- Digital tachograph

### ADAS/GSR equipment including

- Blind spot info system (Right side)
- Moving off info system
- Reverse camera
- Intelligence speed assist (speed limit display)
- Driver drowsiness attention warning
- Alcohol ignition interlock device preparation

### OPTIONAL

- Front door 1,200 mm, 2 leaves, int. opening
- Middle door 1,200 mm, 2 leaves int. opening
- Third door 800 mm
- Ski carrier preparation
- Towing device preparation
- Towing device

### OPTIONAL

- Electrical ramp for disabled persons
- Central platform right side

### OPTIONAL

- Warning lights with open doors
- Reverse sensors
- 12 V socket on the dashboard

### OPTIONAL

- Two roof hatches with electrical control
- Double glasses of the lateral windows, driver's window and passenger doors
- A/C with or without heating
- Electrical defrosting of the front steps
- Electrical defrosting of the windshield

### OPTIONAL

- Driver's seat with heating system
- Driver's cabin completely closed
- Driver's refrigerator
- Additional driver's heater
- Driver's A/C
- Movable cluster

### OPTIONAL

- Blind spot info system (Left and Right)
- Alcohol ignition interlock device

### AFTERTREATMENT SYSTEM EVI

- HI-SCR after treatment system, main components: Diesel Oxydation Catalyst, Diesel Particulate Filter, Selective Catalytic Reduction of Nox with AdBlue®, Clean Up Catalyst

### GEARBOX

- Automatic ZF Ecolife

### REAR AXLE

- Single reduction hypoid rear axle equipped with "Quiet ride gears set" for low noise
- Standard axle ratio: 5.63 (Cursor 9) / 5.29 (Tector 7)

### FRONT AXLE / STEERING

- Front axle with independent wheels suspension
- Worm-type steering with integrated power steering

### SUSPENSION

- Full air suspension with self-leveling sensor and kneeling
- Front: 2 combined air springs/2 shock absorbers/1 leveling sensor
- Rear: 4 air springs/4 shock absorbers /1 stabilization bar/2 leveling sensors

### COMPRESSED AIR

- Dual cylinder air compressor 630 cm<sup>3</sup> (pressure 9.5 bar)
- Integrated air dryer: bleeding valves on the air tanks

### BRAKES

- EBS
- Pneumatic service and emergency braking system with two independent air circuits
- Brake discs, front and rear, with floating calipers and ABS
- Pneumatic parking brake, operating on the rear wheels

### RETARDER

- Decompression engine brake
- Electromagnetic retarder with brake pedal control and hand lever control, Hydraulic integrated retarder

### FUEL TANK AND UREA TANK

- 200 litres diesel tank
- 80 litres AdBlue® tank

### TYRES AND WHEELS

- 275/70 R 22.5 tyres

### OPTIONAL

- Automatic Voith Diwa NXT

### OPTIONAL

- Please see with our commercial representative

### OPTIONAL

- Lifting/Lowering of the vehicle's suspensions
- Reinforced shock absorbers
- Kneeling

### OPTIONAL

- ESP

### OPTIONAL

- 320 litres diesel tank
- AdBlue® Tank:50 litres (3 doors version only)

### OPTIONAL

- With spare wheel